

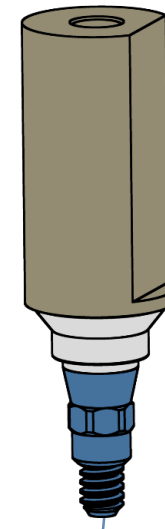


exocad

LASAK BioniQ QR Exocad library structure

LASAK_BioniQ_(Premill).zip

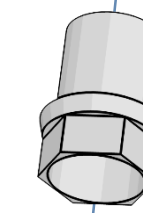
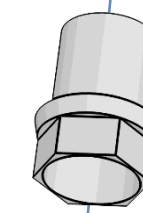
Scanbody QR, indexed – long
Ref. No. 2815.00



bioniq_qr_premill_ag

bioniq_qr_premill_nt

Dummy base shown
in the Exocad library



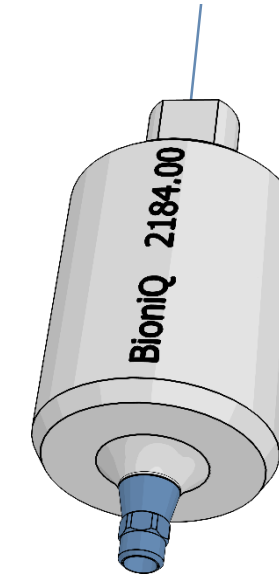
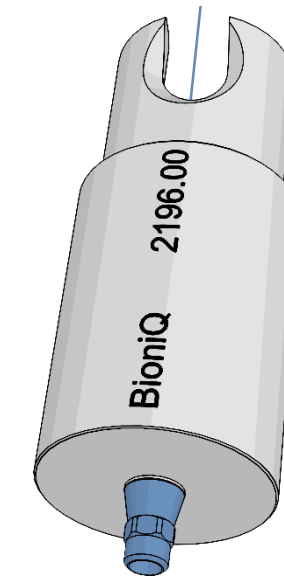
CAM
replaced

CAM
replaced

BioniQ QR Premill abutment AG

BioniQ QR Premill abutment NT

The real base of the
BioniQ component

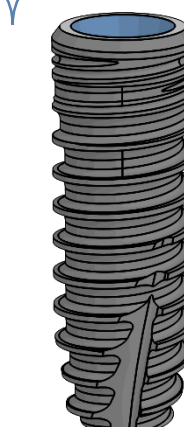
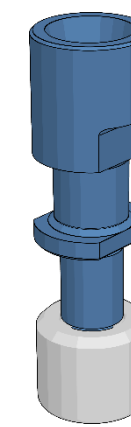


Ref. No.
2196.00

Ref. No.
2184.00

Free library

LASAK_BioniQ_(Premill).zip



Ref. No.
2858.00

S3.5
S4.0
T4.0
S5.0
T5.0

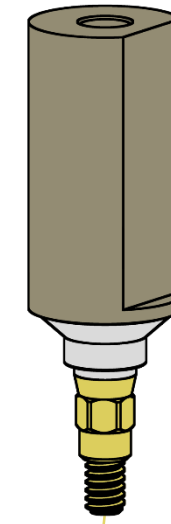


exocad

LASAK BioniQ QN Exocad library structure

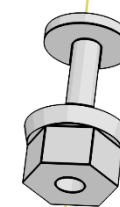
LASAK_BioniQ_(Premill).zip

Scanbody QN, indexed – long
Ref. No. 2840.00



bioniq_qn_premill_ag

bioniq_qn_premill_nt



Dummy base shown
in the Exocad library



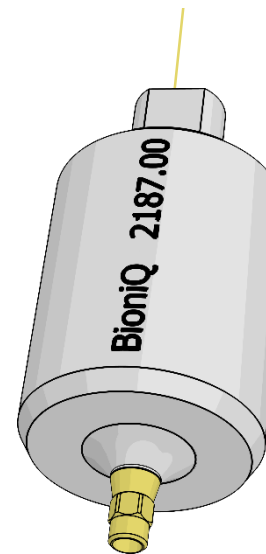
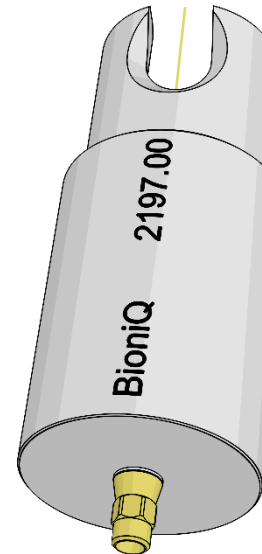
CAM
replaced



CAM
replaced

BioniQ QN Premill abutment AG

BioniQ QN Premill abutment NT



Ref. No.
2187.00

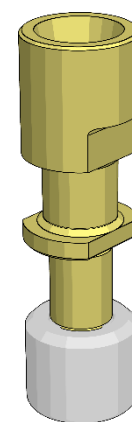
Ref. No.
2187.00

The real base of the
BioniQ component

Free library

LASAK_BioniQ_(Premill).zip

Ref. No.
2859.00



S2.9

