



exocad

LASAK BioniQ QR Exocad library structure

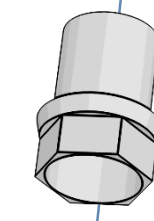
LASAK_BioniQ_(one piece).zip

Scanbody QR, indexed – narrow
Ref. No. 2876.00

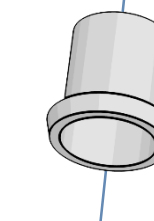


Dummy base shown
in the Exocad library

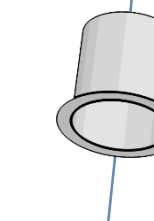
bioniq_qr_d



bioniq_qr_ni_d



bioniq_qr_b_d



CAM replaced

BioniQ QR



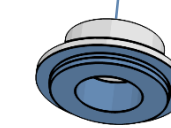
CAM replaced

BioniQ QR/NI



CAM replaced

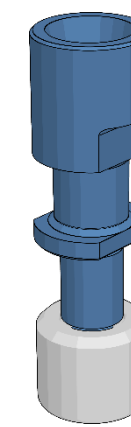
BioniQ QR/B



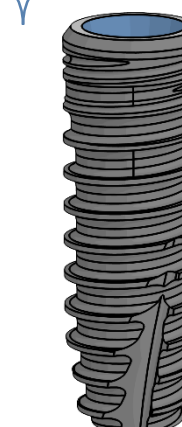
The real base of the
BioniQ component

Manufactured only by LASAK

LASAK_BioniQ_(one piece).zip



Ref. No.
2858.00



S3.5
S4.0
T4.0
S5.0
T5.0

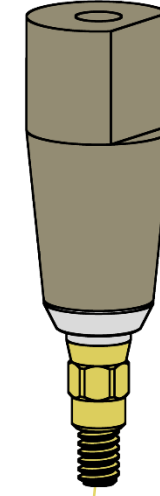


exocad

LASAK BioniQ QN Exocad library structure

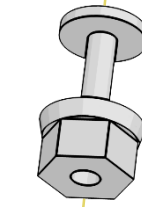
LASAK_BioniQ_(one piece).zip

Scanbody QN, indexed – narrow
Ref. No. 2877.00

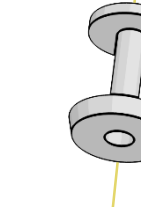


Dummy base shown
in the Exocad library

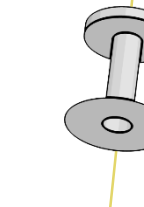
bioniq_qn_d



bioniq_qn_ni_d



bioniq_qn_b_d

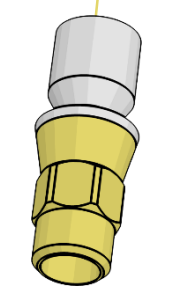


CAM replaced

CAM replaced

CAM replaced

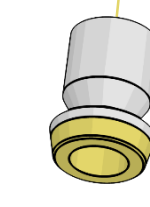
BioniQ QN



BioniQ QN/NI



BioniQ QN/B

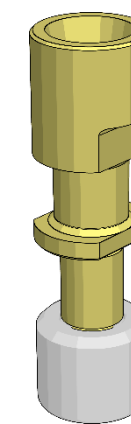


The real base of the
BioniQ component

Manufactured only by LASAK

LASAK_BioniQ_(one piece).zip

Ref. No.
2859.00



S2.9

